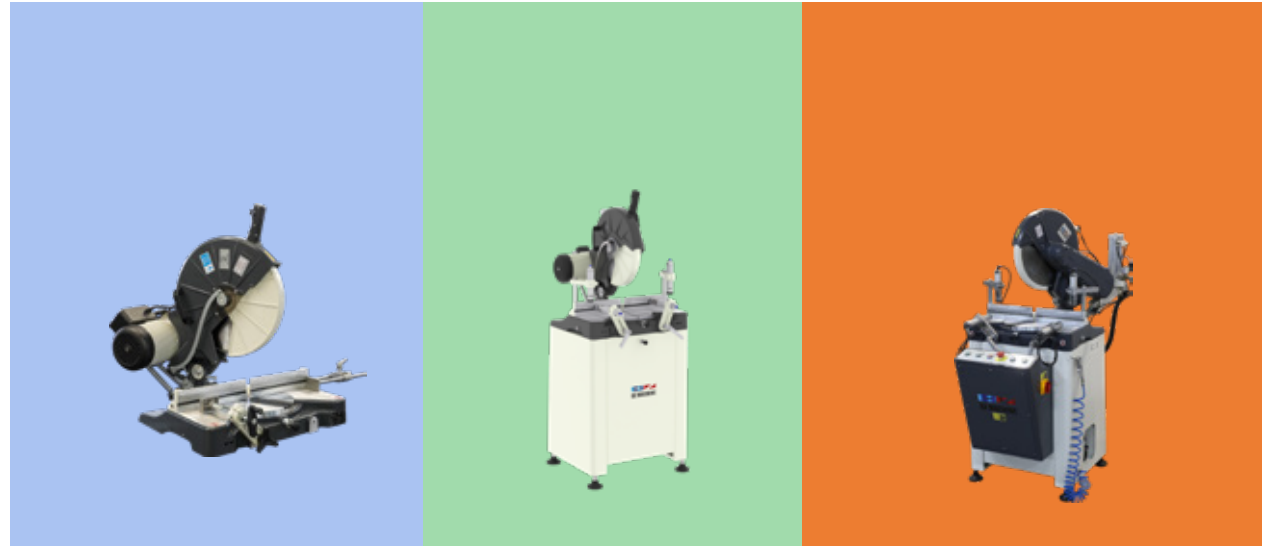


VEGA SERIES

COMPARING TABLE



	VEGA - I 400	VEGA - II M	VEGA - II
Material (Alm / Pvc / Wood)	✓	✓	✓
Cutting Type (Manual / Automatic)	Manual	Manual	Automatic (Two Hand Button)
Saw Diameter (mm)	Ø 400	Ø 400	Ø 400
Engine Power - (kW)	2,2	2,2	2,2
Saw Speed (rpm)	3000	3000	3000
Saw Thickness (mm)	3,6	3,6	3,6
Cutting Angle (°)	45/ 45	45/ 45	45/ 45
Vertical Vise - Manual / Pneumatic	X	Pneumatic (2 pcs.)	Pneumatic (2 pcs.)
Horizontal Vice - Manual / Pneumatic	Manual (1 pcs.)	Pneumatic (2 pcs.)	Pneumatic (2 pcs.)
Conveyor	Opt.	Opt.	Opt.
Profile Support	✓	X	X
Spray Saw Cooling System	X	✓	✓